

2007 Chatham Square Survey Results



**The Community Foundation
for Greater New Haven**

Taking philanthropy to the next generation

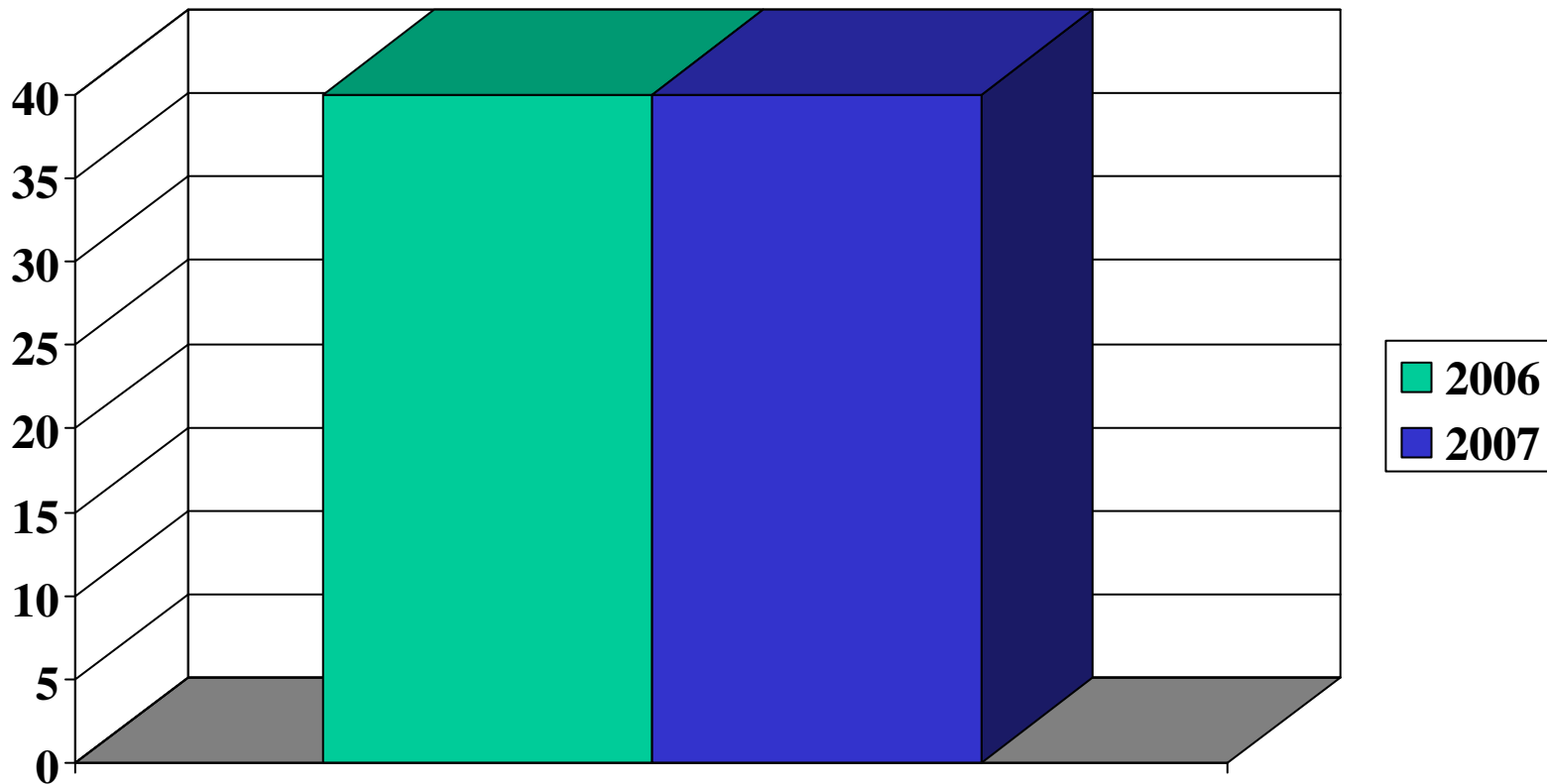


2007

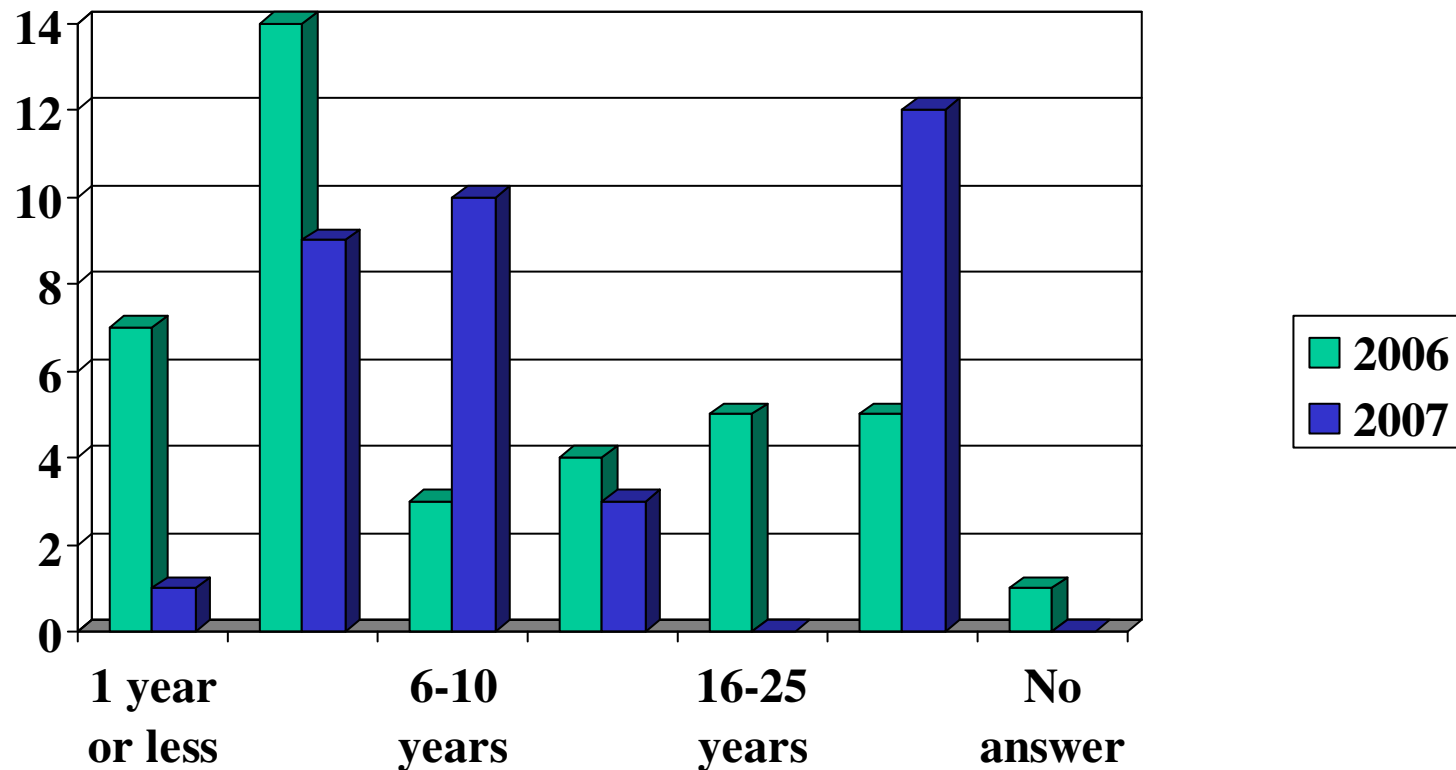
Survey Results

Demographics

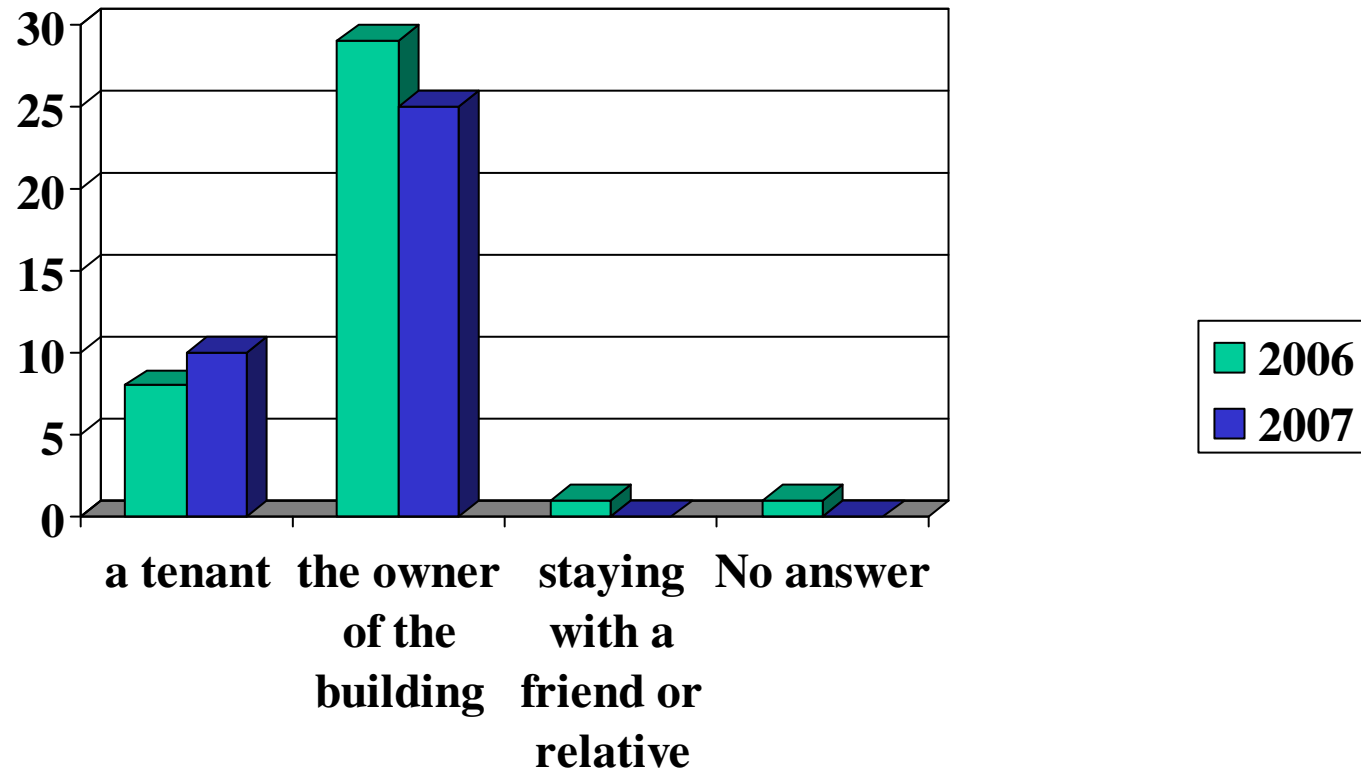
Number of Respondents



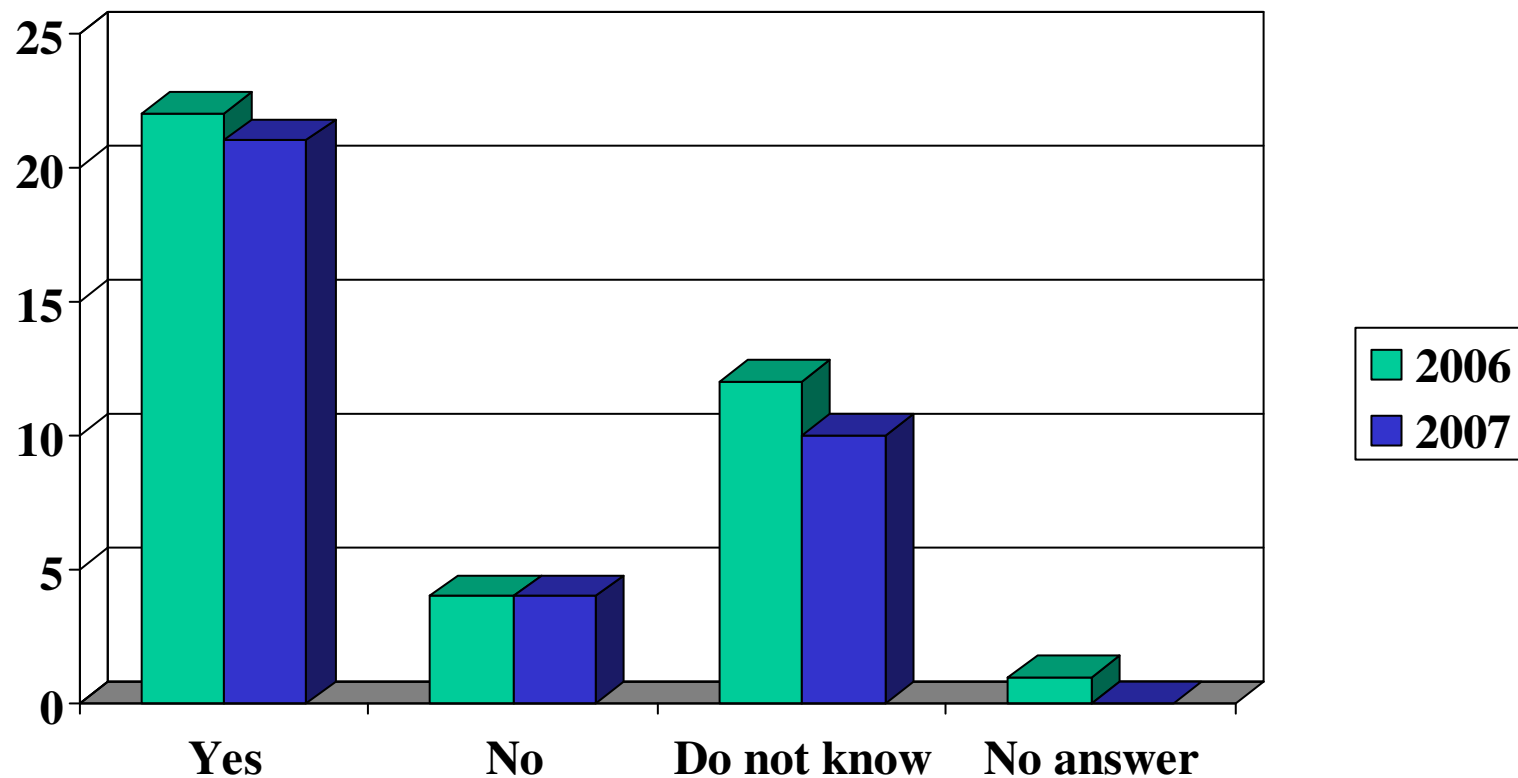
How many years have you lived in Chatham Square?



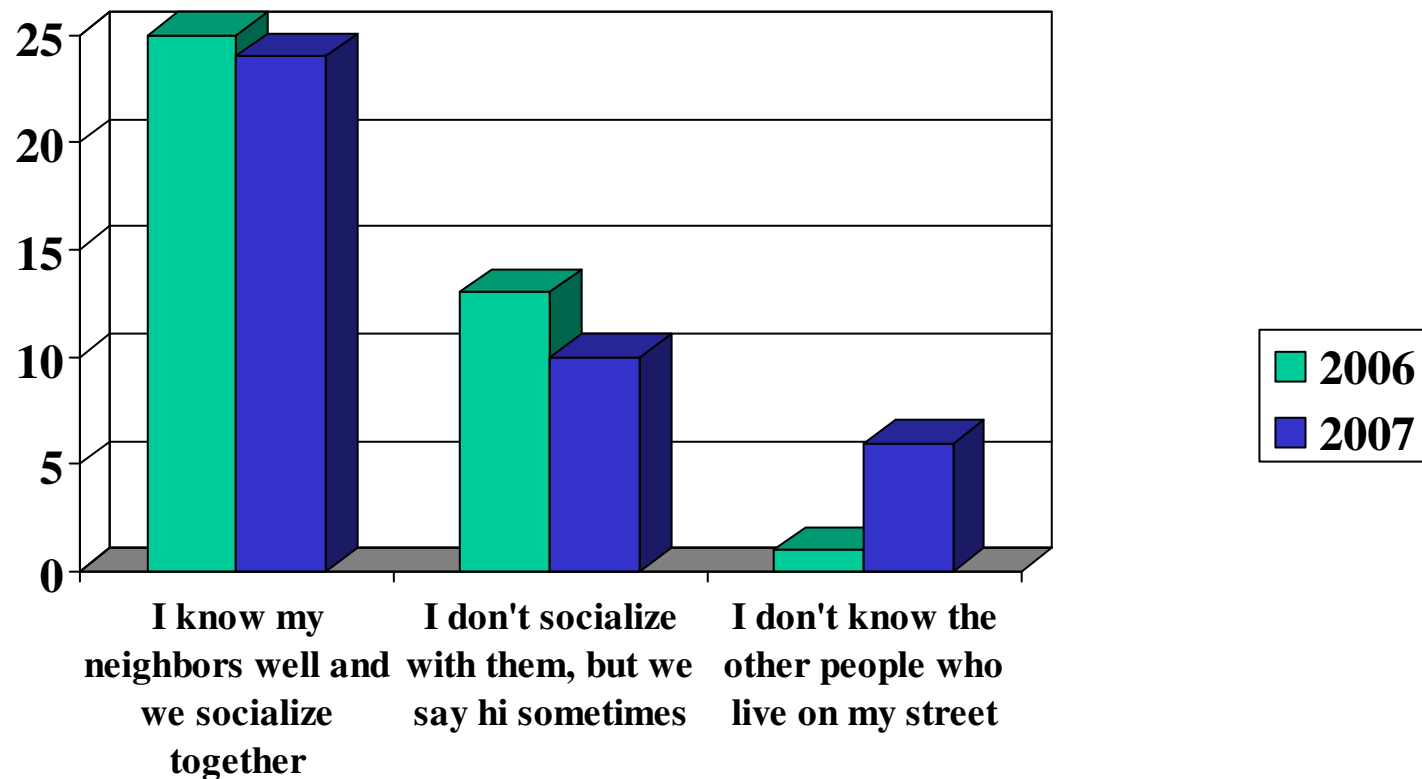
Are you:



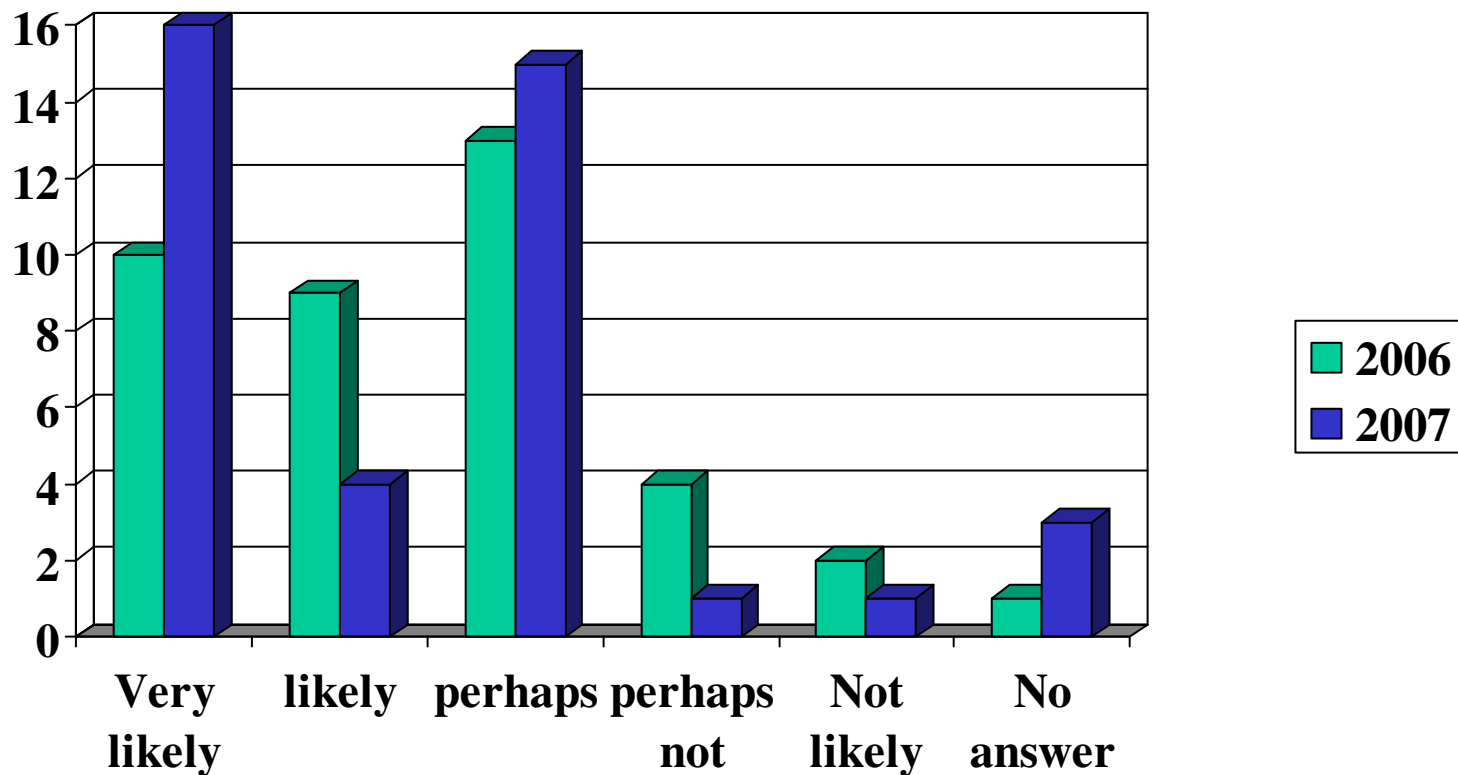
Do you think you will be living in Chatham Square five years from now?



How well do you know the neighbors (people living next door and those on your street)?



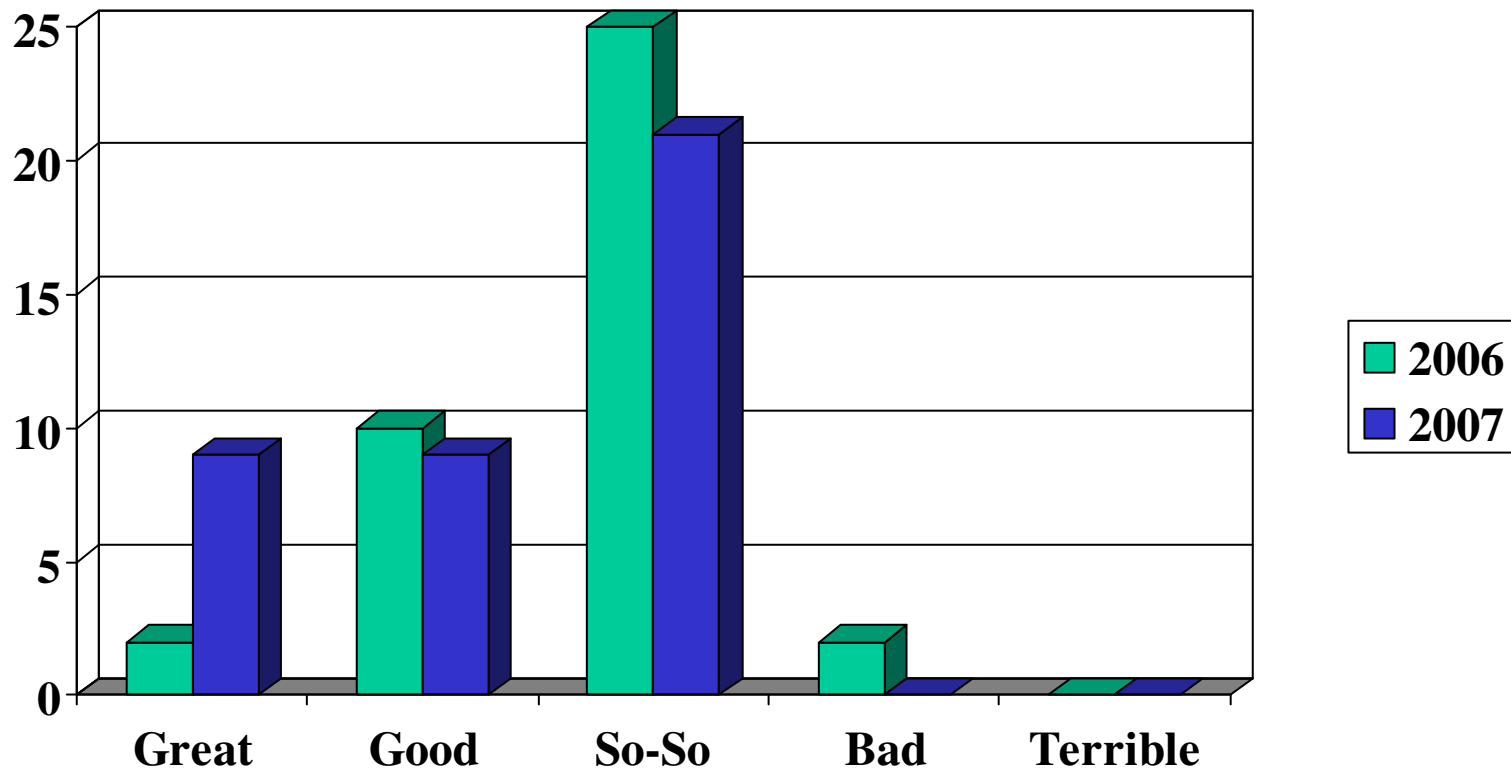
How likely are you to encourage a friend or relative to move to Chatham Square?



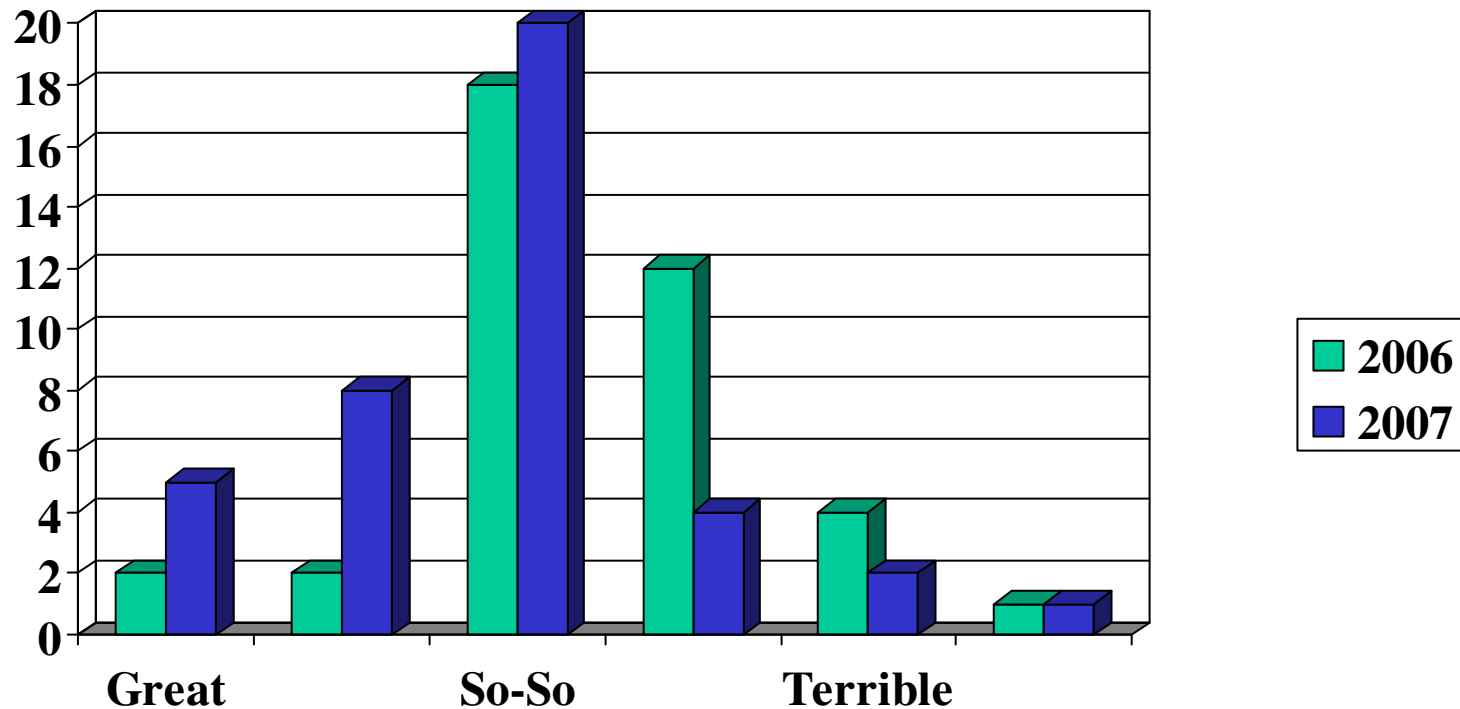
2007 Survey Results

General Impressions

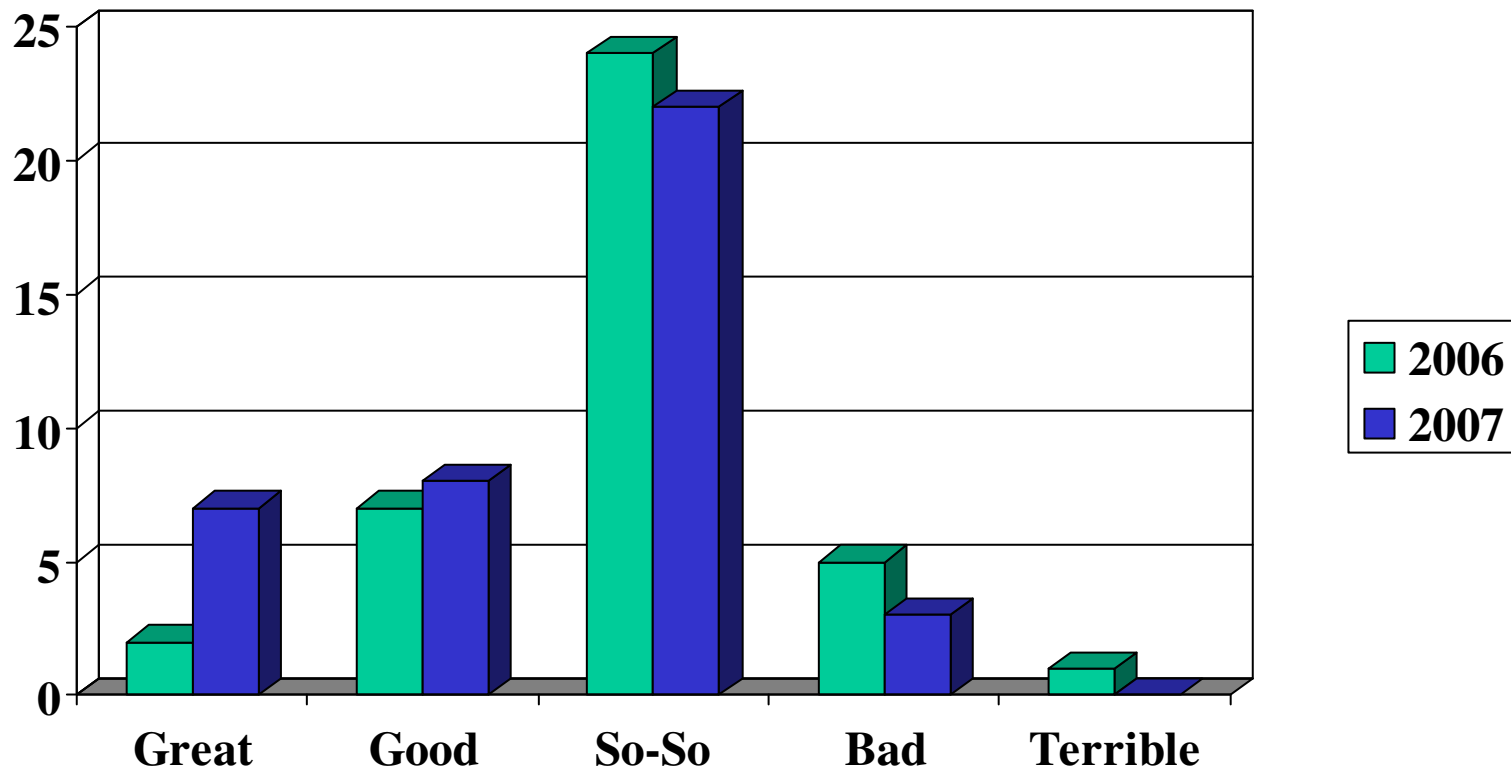
How would you rate the quality of life in your neighborhood?



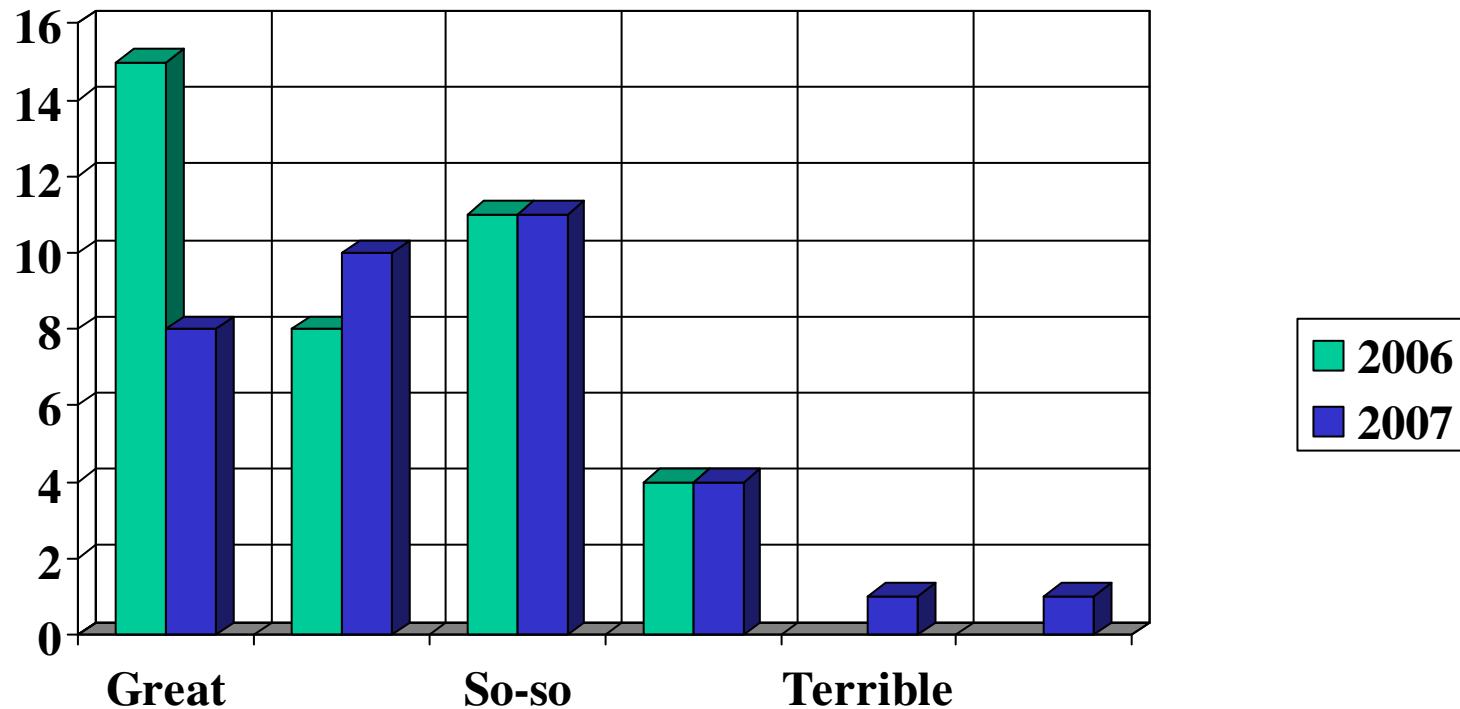
How would you rate the image (reputation) of the neighborhood?



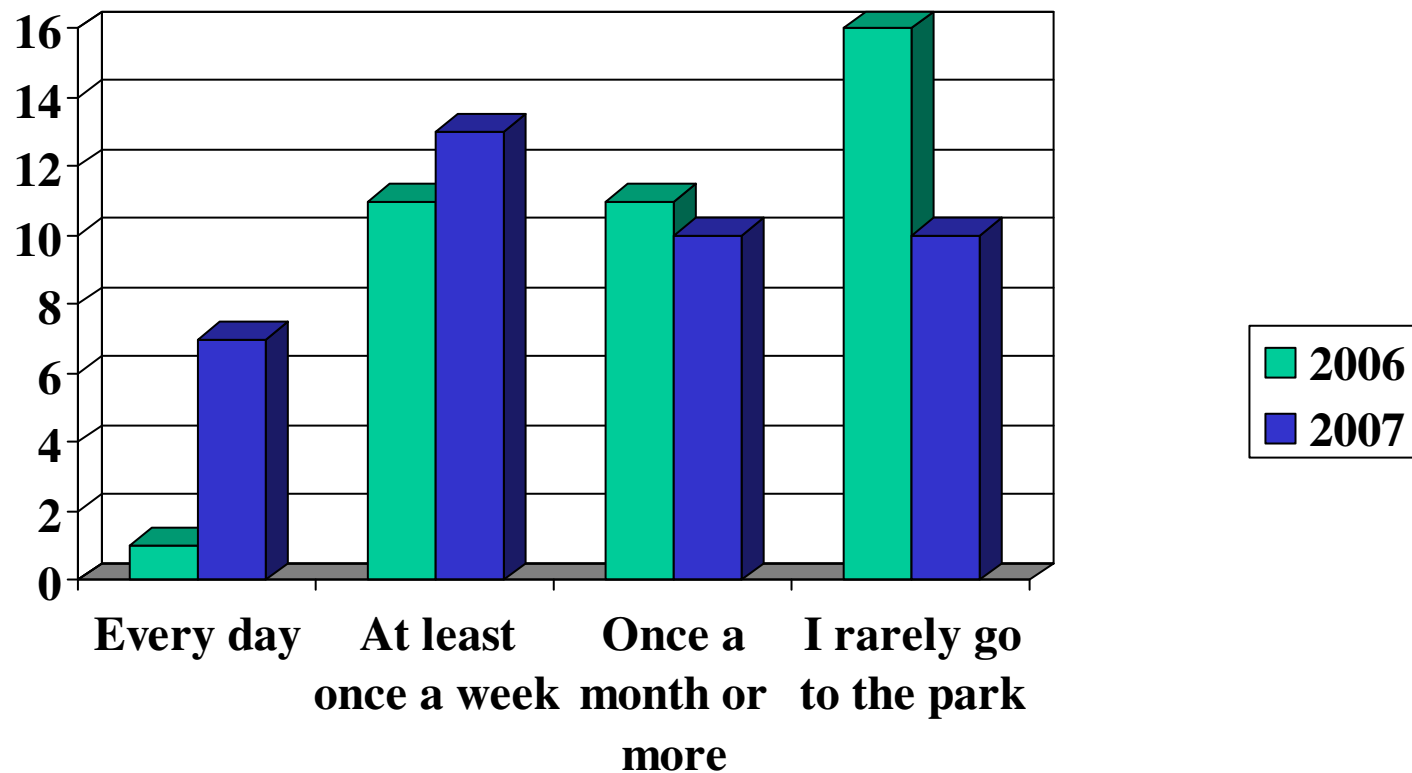
How would you rate the physical condition of the neighborhood?



How would you rate the exterior condition of the house you are living in?



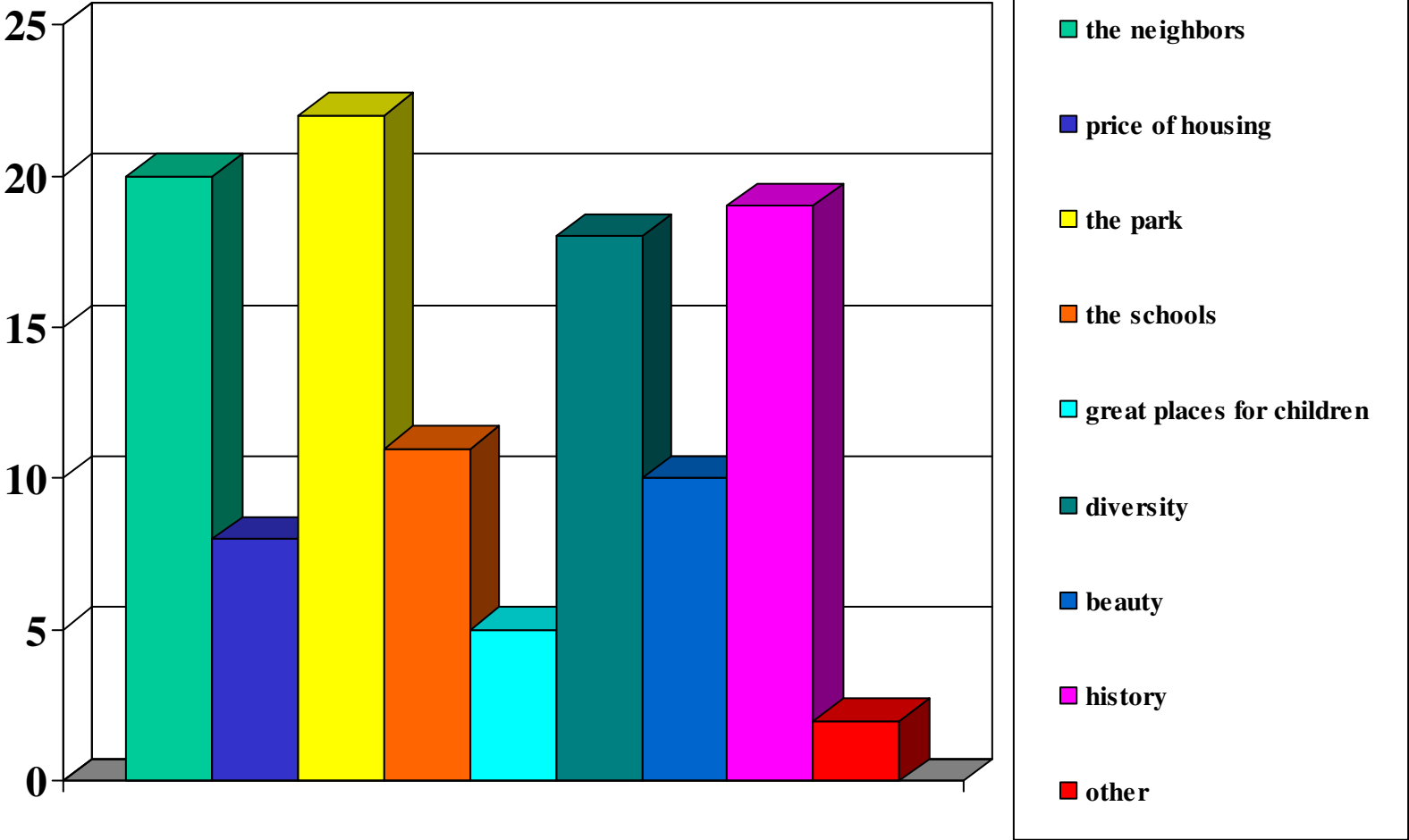
How often do you go to the Chatham Square park?



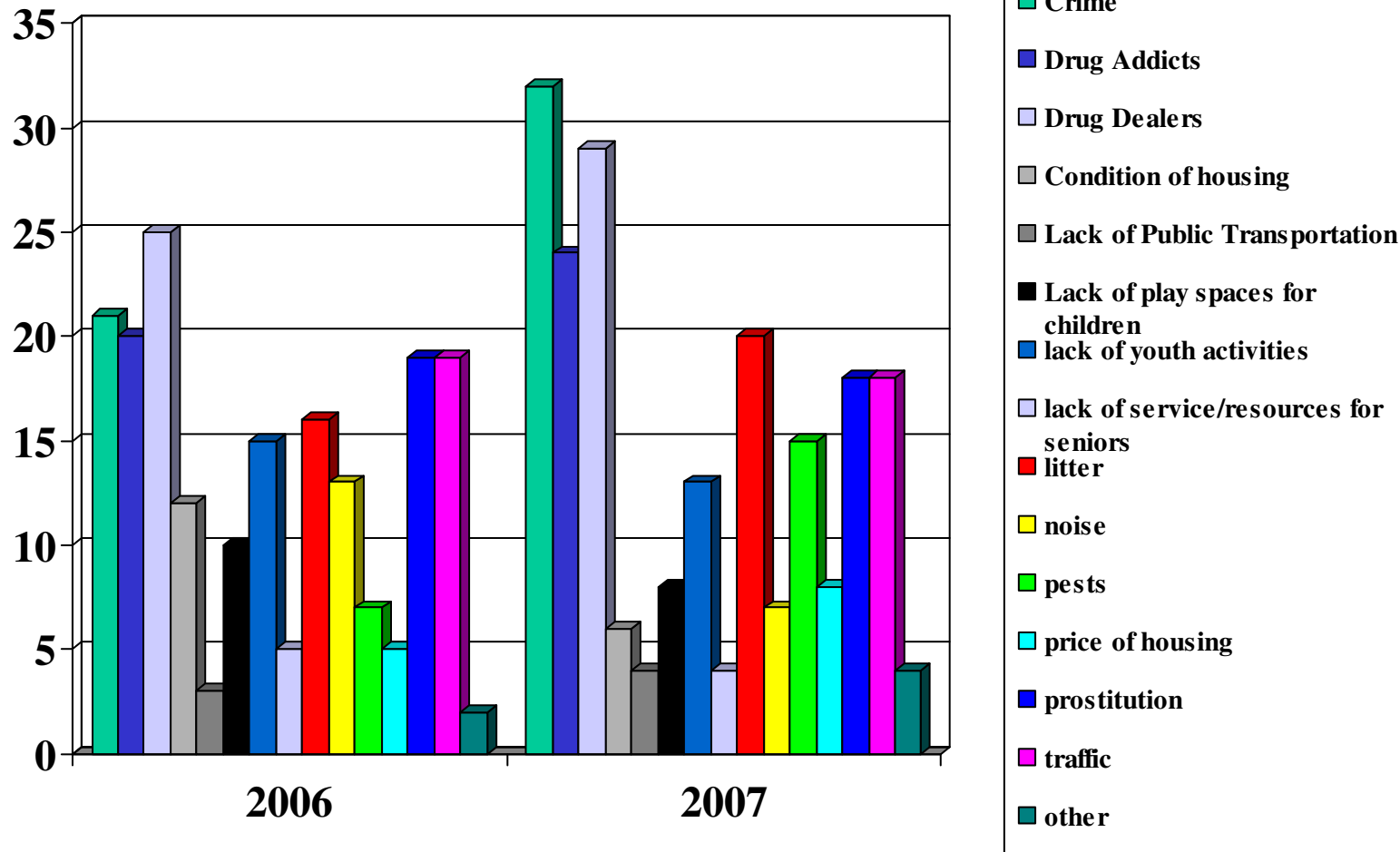
2007 Survey Results

Specific Impressions

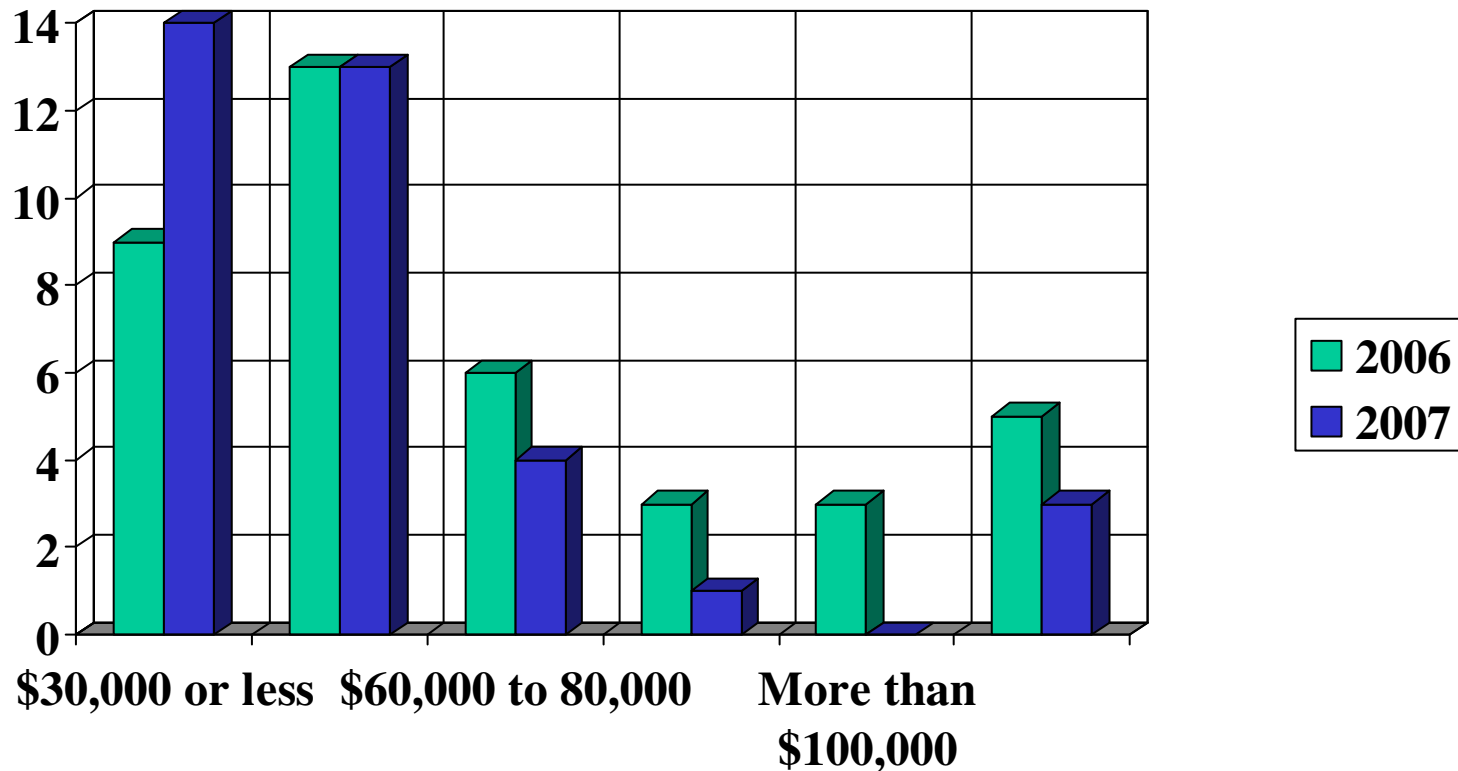
What do you think is the best thing about our neighborhood? (circle all that apply)



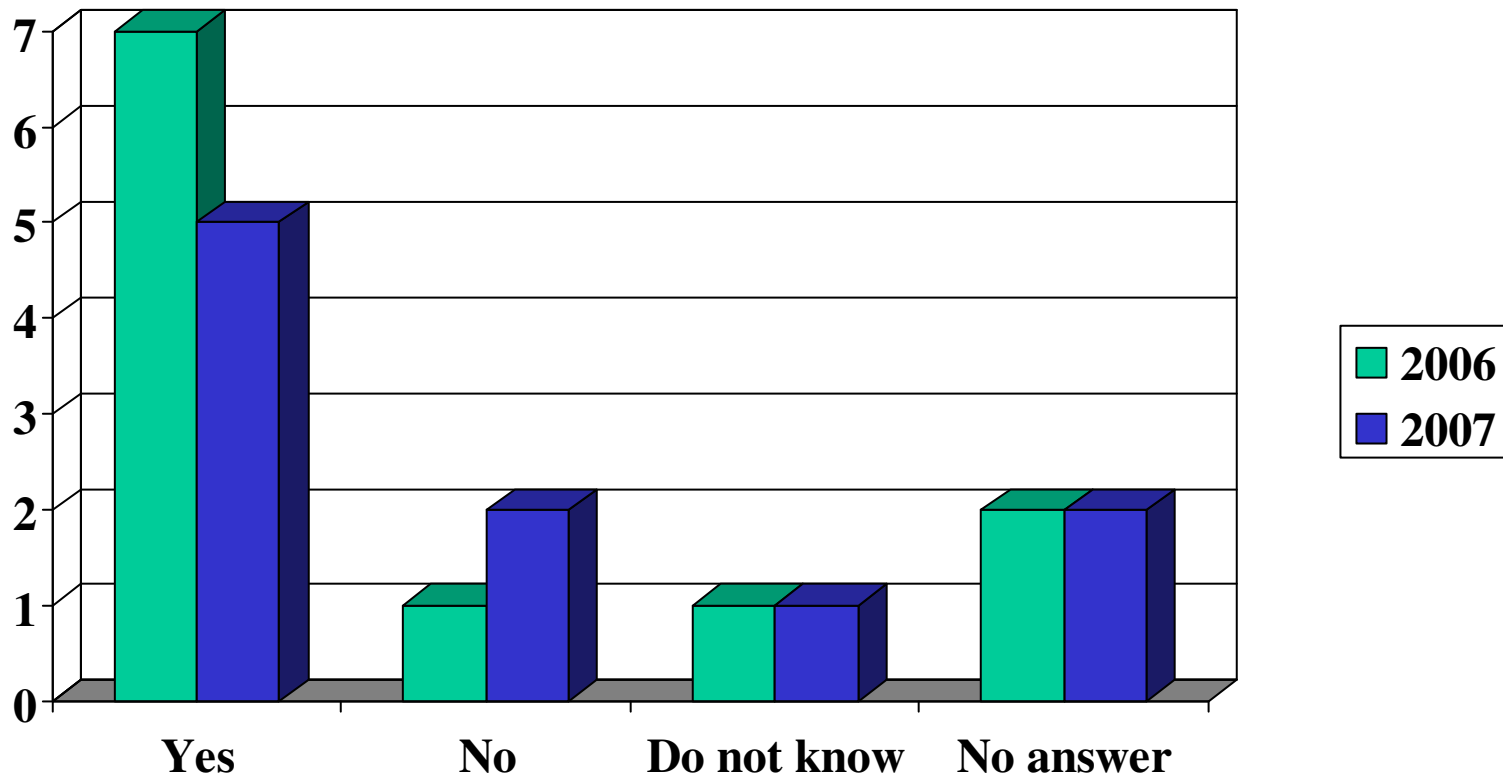
Issues that are most concerning to residents



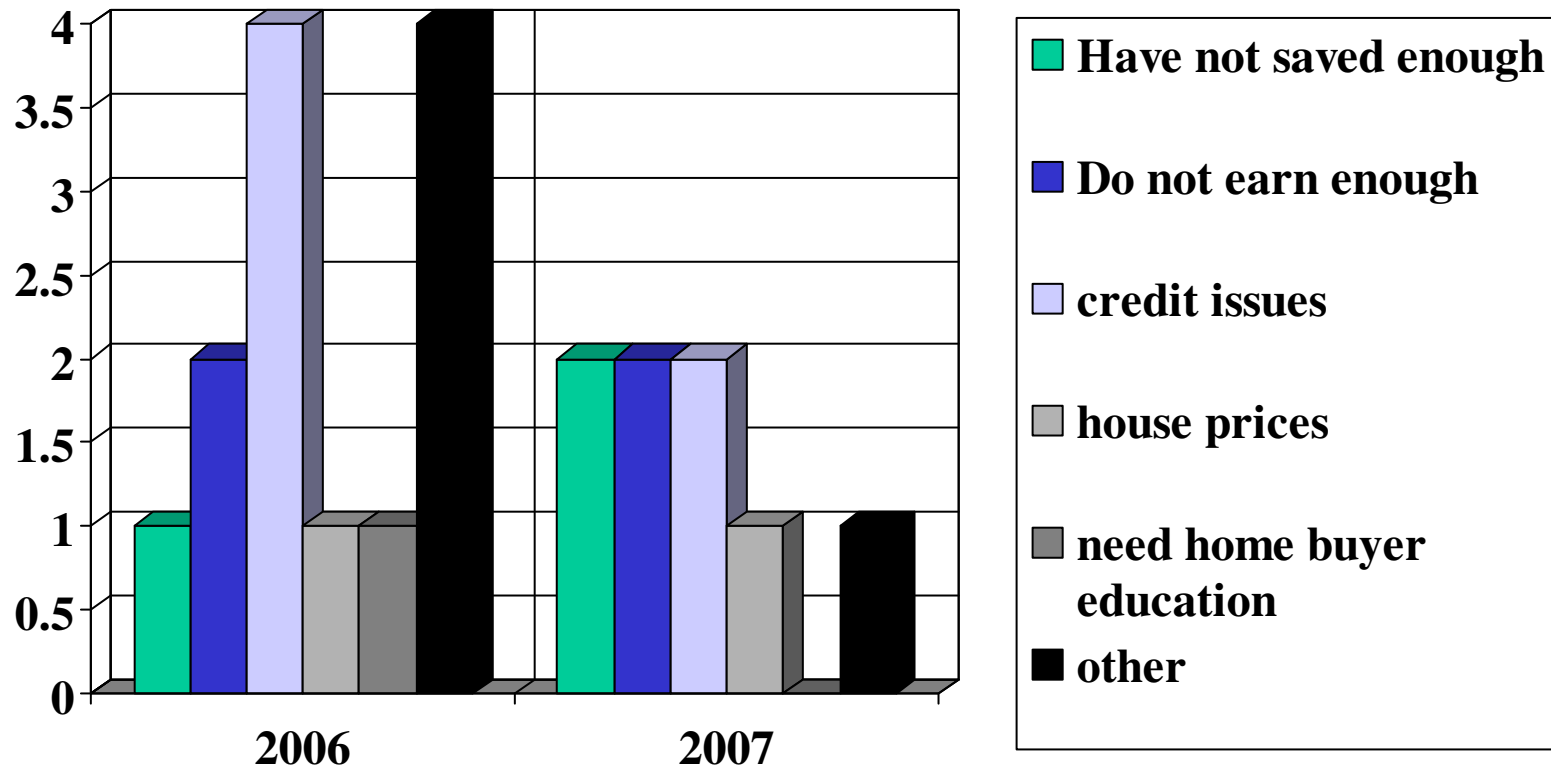
Which category below most closely approximates your household income level?



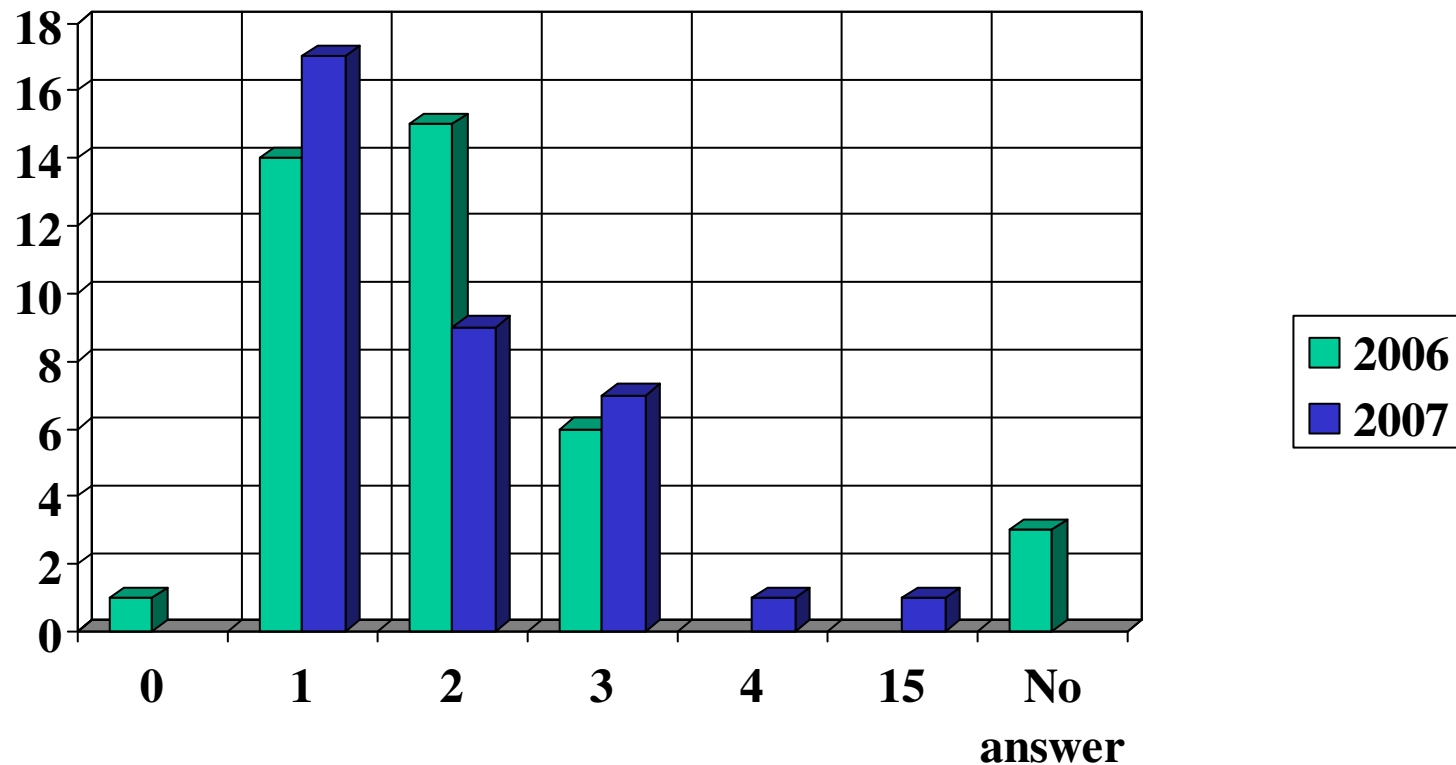
If you are a tenant, are you hoping or planning to become a homeowner?



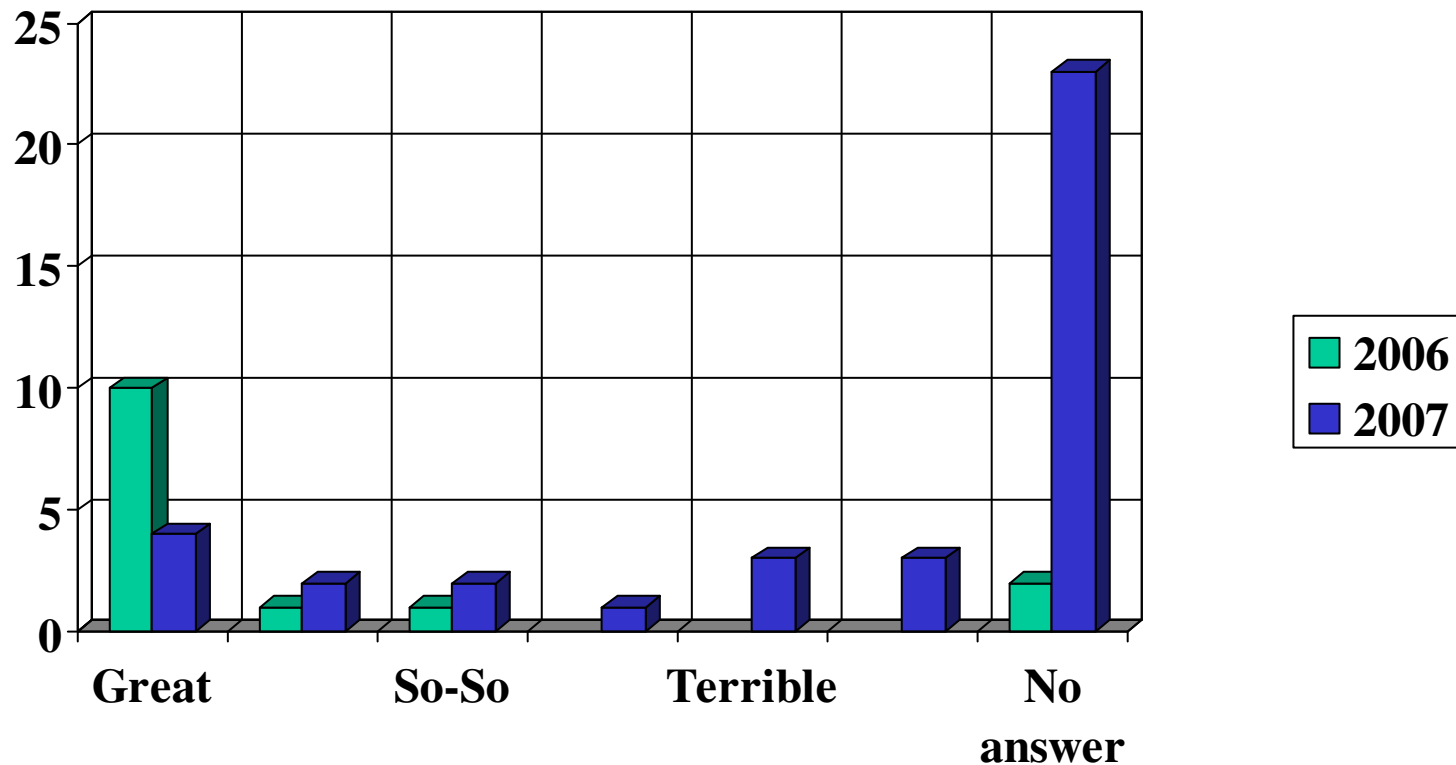
If you are a tenant, which barriers are stopping you from becoming a homeowner?
(circle all that apply)



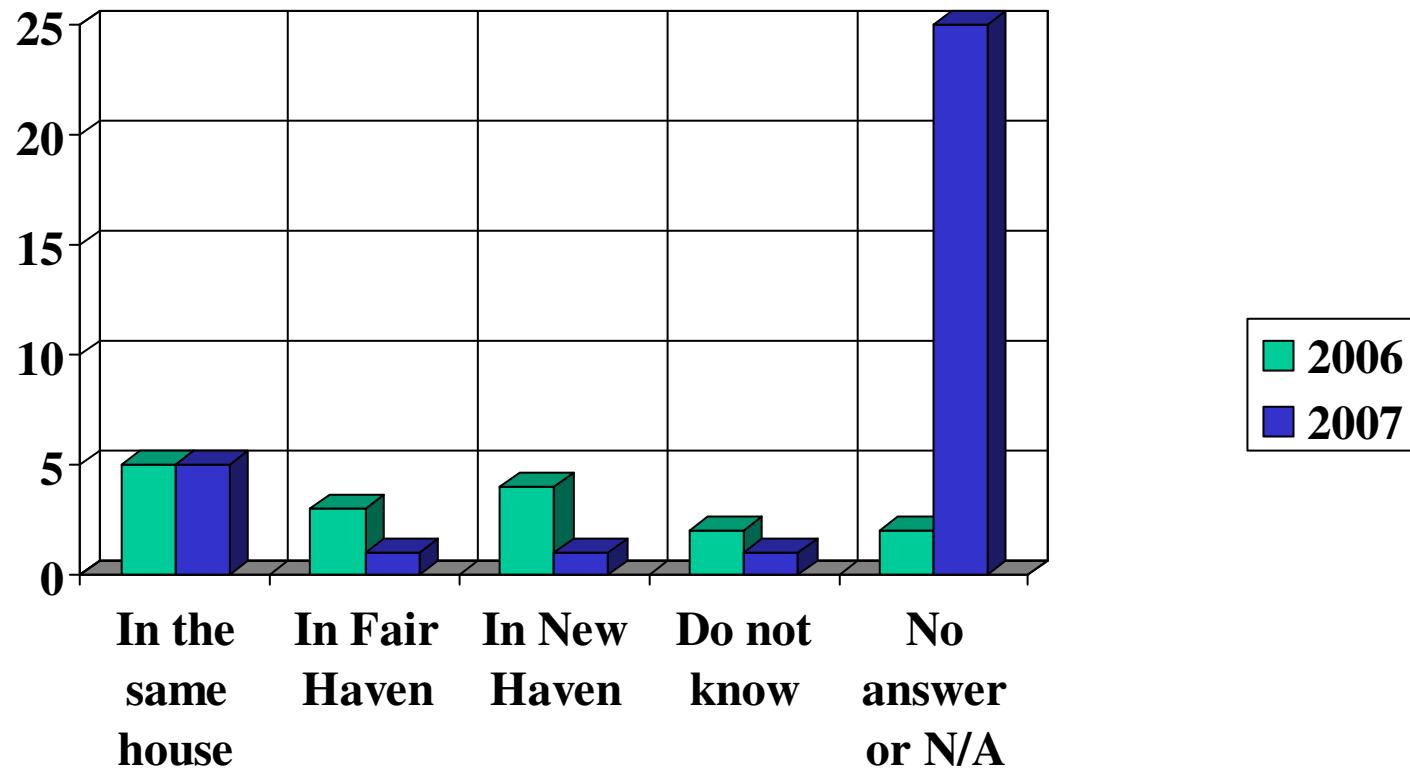
How many units are in the house/building where you live?



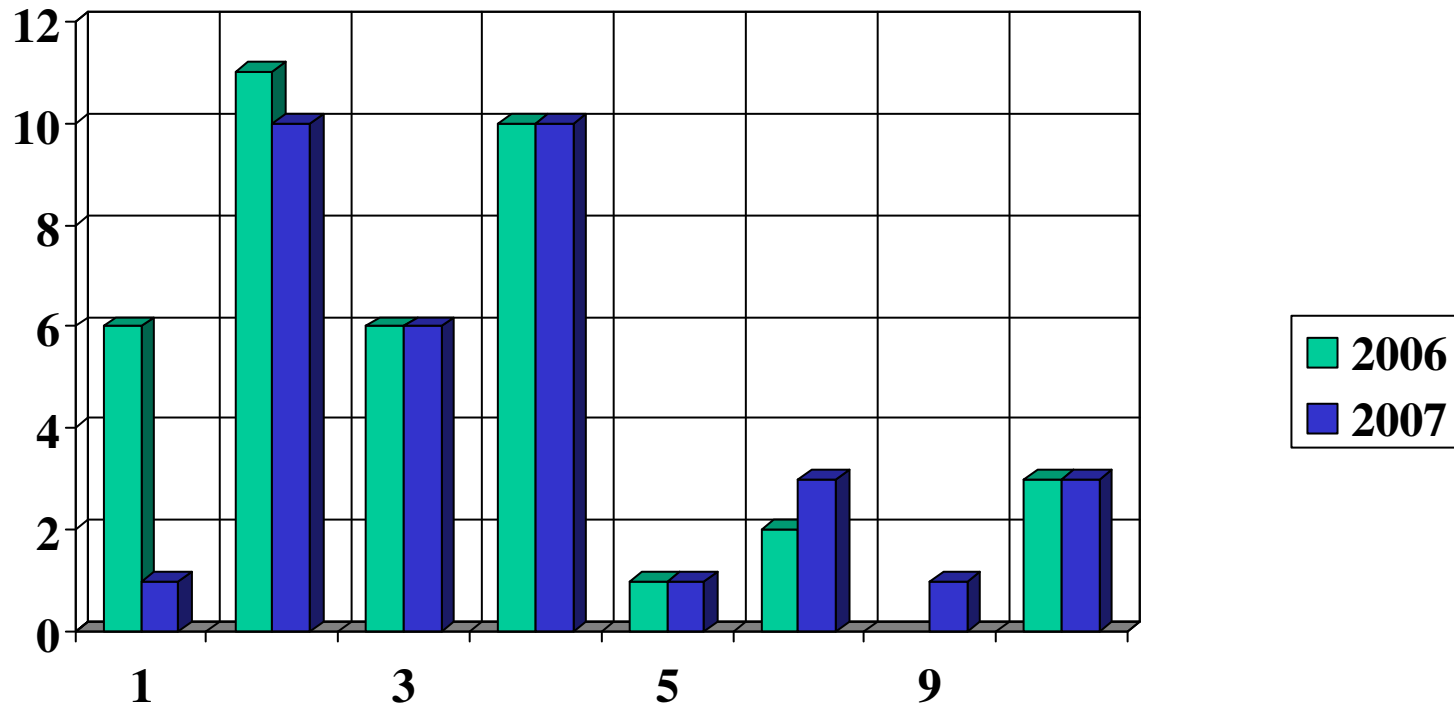
If you are a tenant, how would you rate your landlord?



If you are a tenant, where does your landlord live?



Your household consists of how many people?



How would you rate the housing market in the neighborhood?

