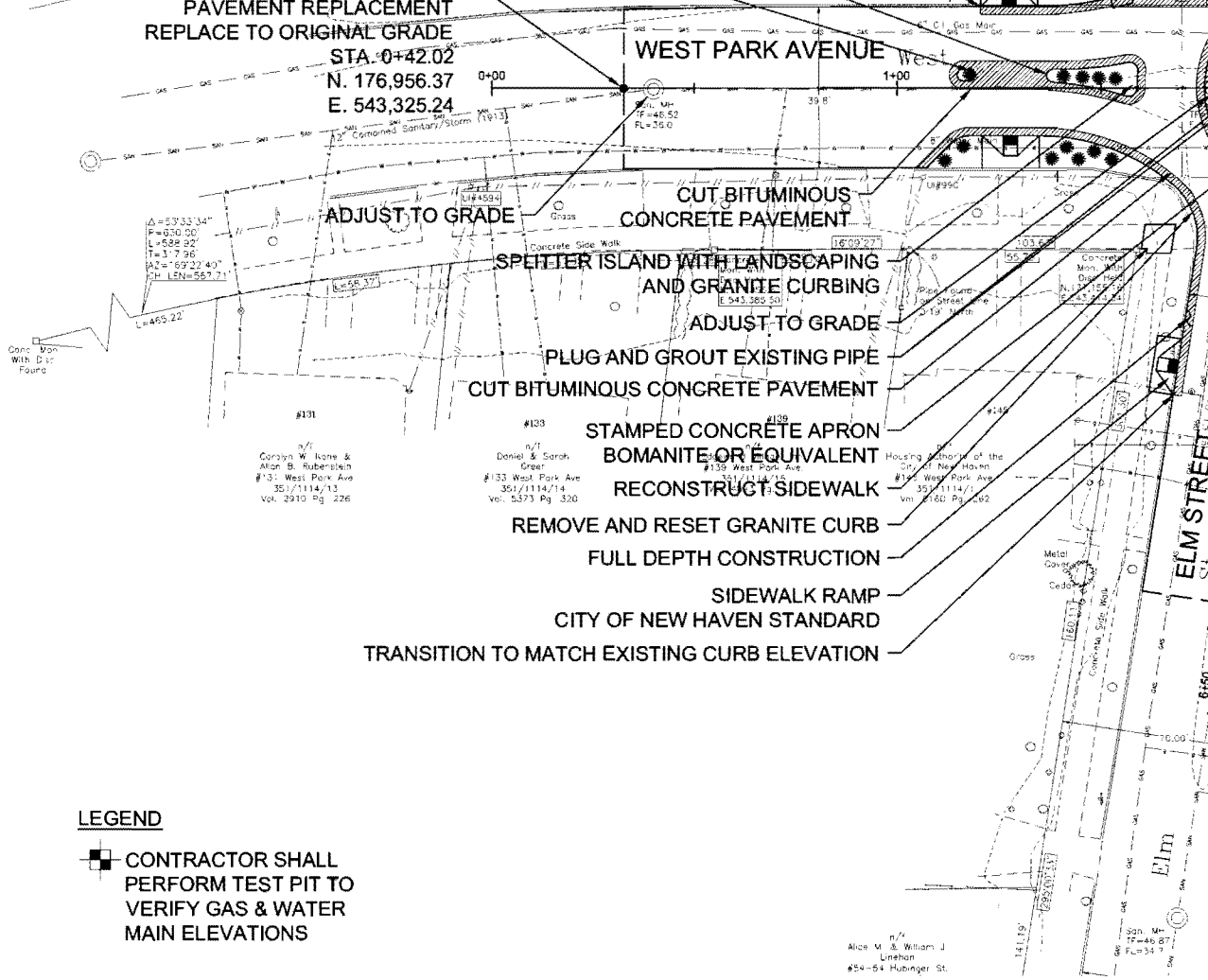


- 8' X 10' CONCRETE DRY WELL WITH STANDARD MANHOLE FRAME AND COVER
10' - 12" RCP
- TYPE "C" CATCH BASIN FRAME AND GRATE
- SIDEWALK RAMP CITY OF NEW HAVEN STANDARD
- 78' - 12" RCP
- TRANSITION TO MATCH EXISTING CURB ELEVATION
- 8' x 10' CONCRETE DRY WELL WITH CATCH BASIN FRAME AND GRATE
- REMOVE EXISTING CURB AND PAVEMENT PLACE FILL, TOPSOIL AND LANDSCAPE
- SPLITTER ISLAND WITH LANDSCAPING AND GRANITE CURBING
- LIMIT OF MILLING AND PAVEMENT REPLACEMENT REPLACE TO ORIGINAL GRADE

- ABANDON CATCH BASIN
- CENTER OF ROUNDABOUT
STA. 2+00.00 WESTPORT AVE
STA 5+00.00 ELM STREET
N. 177,206.30
E. 543,387.51
- RELOCATE MONUMENT
- REMOVE TRAFFIC POLE AND SPEED RADAR EQUIPMENT



LEGEND

- CONTRACTOR SHALL PERFORM TEST PIT TO VERIFY GAS & WATER MAIN ELEVATIONS

REV.	DATE	REVISION DESCRIPTION	SHEET NO.

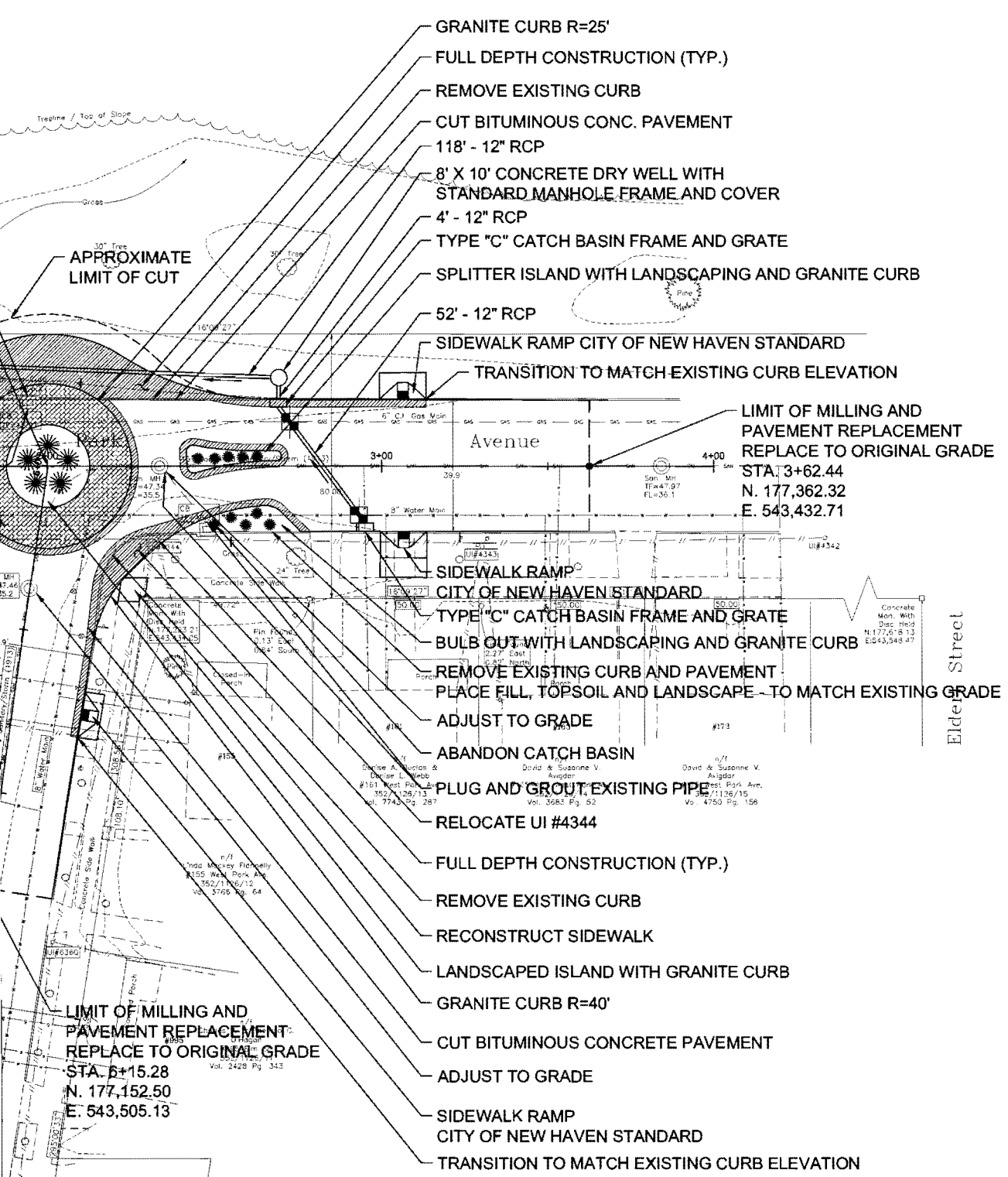
DESIGNER/DRAFTER:
C. HILSOP

CHECKED BY:
K. SMITH

SCALE IN FEET
0 20 40
SCALE 1"=20'



900 Chapel Street, Suite 1400
New Haven, CT 06510
Phone: 203-865-2191
Fax: 203-624-0484



- GRANITE CURB R=25'
- FULL DEPTH CONSTRUCTION (TYP.)
- REMOVE EXISTING CURB
- CUT BITUMINOUS CONC. PAVEMENT
- 118' - 12" RCP
- 8' X 10' CONCRETE DRY WELL WITH STANDARD MANHOLE FRAME AND COVER
- 4' - 12" RCP
- TYPE "C" CATCH BASIN FRAME AND GRATE
- SPLITTER ISLAND WITH LANDSCAPING AND GRANITE CURB
- 52' - 12" RCP
- SIDEWALK RAMP CITY OF NEW HAVEN STANDARD
- TRANSITION TO MATCH EXISTING CURB ELEVATION

LIMIT OF MILLING AND PAVEMENT REPLACEMENT
 REPLACE TO ORIGINAL GRADE
 STA. 3+62.44
 N. 177,362.32
 E. 543,432.71

- SIDEWALK RAMP CITY OF NEW HAVEN STANDARD
- TYPE "C" CATCH BASIN FRAME AND GRATE
- BULB OUT WITH LANDSCAPING AND GRANITE CURB
- REMOVE EXISTING CURB AND PAVEMENT PLACE FILL, TOPSOIL AND LANDSCAPE TO MATCH EXISTING GRADE
- ADJUST TO GRADE
- ABANDON CATCH BASIN
- PLUG AND GROUT EXISTING PIPE
- RELOCATE UI #4344

- FULL DEPTH CONSTRUCTION (TYP.)
- REMOVE EXISTING CURB
- RECONSTRUCT SIDEWALK
- LANDSCAPED ISLAND WITH GRANITE CURB
- GRANITE CURB R=40'
- CUT BITUMINOUS CONCRETE PAVEMENT
- ADJUST TO GRADE
- SIDEWALK RAMP CITY OF NEW HAVEN STANDARD
- TRANSITION TO MATCH EXISTING CURB ELEVATION

LIMIT OF MILLING AND PAVEMENT REPLACEMENT
 REPLACE TO ORIGINAL GRADE
 STA. 6+15.28
 N. 177,152.50
 E. 543,505.13

SIGNATURE/ BLOCK:	PROJECT TITLE: WEST PARK AVENUE/ELM STREET TRAFFIC CALMING	TOWN: NEW HAVEN	PROJECT NO. 09-118-01
			DRAWING NO. PLN-01
APPROVED BY: DATE:		DRAWING TITLE: GENERAL PLAN	SHEET NO. 03