



NEW HAVEN PUBLIC SCHOOLS

Safe Return to In-Person Instruction [Update]

Dr. Iline P. Tracey

Superintendent of Schools

Dr. Paul Whyte

Assistant Superintendent for Instructional Leadership

New Haven Board of Education Presentation

August 9, 2021

Overview:



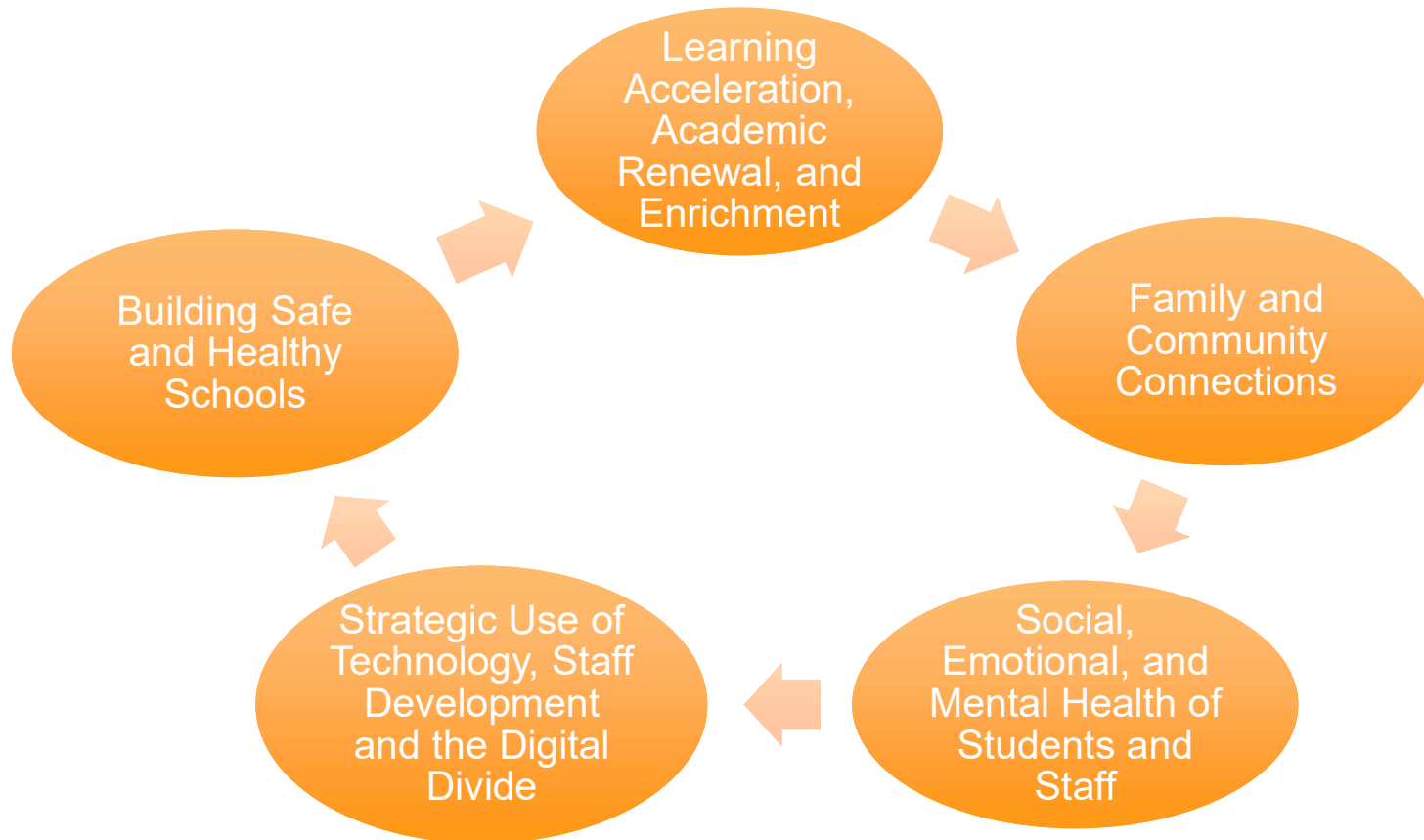
NEW HAVEN PUBLIC SCHOOLS

- The federal government requires that each Local Education Agency (LEA) create a *Safe Return to In-Person Instruction and Continuity of Services Plan* (the Plan).
- This plan must be publicly available online by June 23, 2021 and submitted to the Connecticut State Department of Education (CSDE) as a part of the ARP ESSER application due mid-August 2021.

State Level Priorities Revisited



NEW HAVEN PUBLIC SCHOOLS





NEW HAVEN PUBLIC SCHOOLS

Health and Safety Strategies

Health and Safety: Universal and Correct Wearing of Masks



NEW HAVEN PUBLIC SCHOOLS



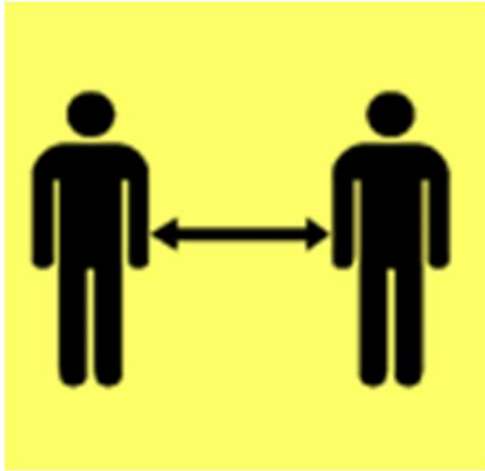
Students and Staff must wear face coverings or masks that completely cover the nose and mouth while in the school building and on school bus, with exceptions only for those students for whom it is not safe to do so due to medical conditions.

“Mask Breaks” will continue to be provided during the day. Parents will be responsible for providing students with face coverings or masks. Schools will have backup disposable masks available for students who forget them.

Health and Safety: Physical distancing (e.g., including use of cohorts)



NEW HAVEN PUBLIC SCHOOLS



Where feasible:

- Maximum distancing will be used
- Cohorts will be maintained
- Bathroom occupancy limitations
- No use of lockers

Health and Safety: Handwashing and respiratory etiquette



NEW HAVEN PUBLIC SCHOOLS



Students must engage in frequent hand washing or sanitizing upon arrival, before and after meals, after bathroom use, and after coughing or sneezing.



- Safety Precautions will limit unnecessary entrance of parents, guardians and other visitors into the building.
- NHPS will continue to use video conferencing to hold meetings for convenience of participants
- If an in-person meeting is necessary, the visiting parties must wear a mask at all times in NHPS buildings regardless of vaccination status

Health and Safety: Diagnostic screening and testing



NEW HAVEN PUBLIC SCHOOLS

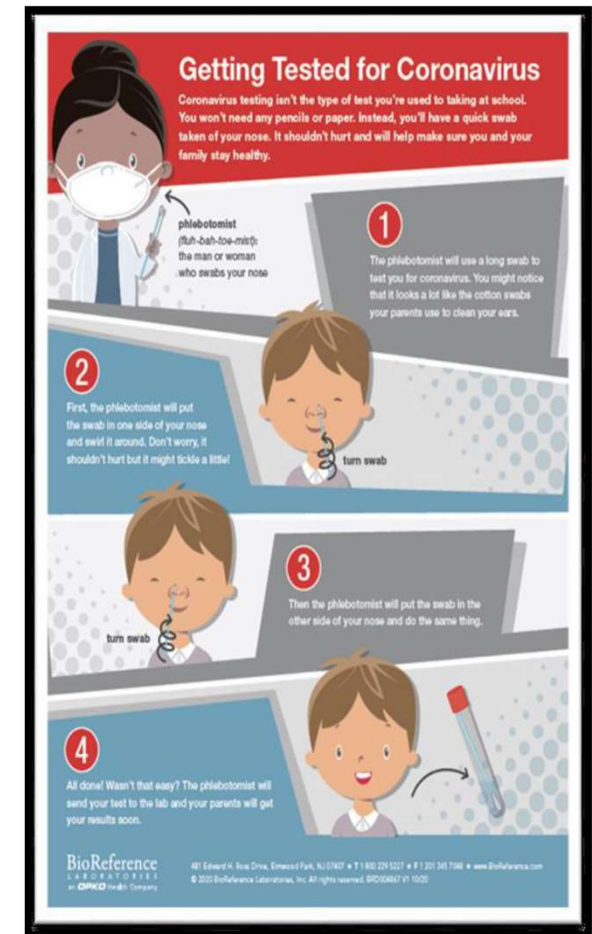
Regular Ongoing Testing

- NHPS will offer weekly testing at each school
- This testing is the same day each week and students/staff must be signed up for it.
- Using the lower nasal swab PCR
- Results in 24 hours to parents and health department
- Families will receive information on how to sign up.

Testing When Exhibiting Symptoms

- **Diagnostic Testing sites are being established for students and staff.**
- **These are testing sites for if the person is exhibiting symptoms.**

PLEASE DO NOT SEND A STUDENT TO SCHOOL IF THEY ARE EXHIBITING SYMPTOMS!



Health and Safety: Vaccination



NEW HAVEN PUBLIC SCHOOLS

- NHPS is holding vaccination clinics for students now and will continue through the fall in partnership.
- Vaccinations will be available during the weeks leading up to school opening



Photo :New Haven Independent 3/3/21

Health and Safety: Contact Tracing



NEW HAVEN PUBLIC SCHOOLS

Student Tracing

Nurse notified of Positive Case or Exposure

Nurse/Administrator completes VEOCI reporting form

Nurse conducts contact tracing any close students and staff contacts in school or on bus

Nurse advises administrator of individual(s) need to self-isolate & criteria to return to school

Contact Tracer documents follow up, contact tracing, and clearance on VEOCI reporting form

Staff Tracing

Administrator notified of Positive Case or Exposure

Administrator completes VEOCI reporting form

Contact Tracer traces any close students and staff contacts in school

Contact Tracer advises administrator of individual(s) need to self-isolate & criteria to return to school

Contact Tracer documents follow up, contact tracing, and clearance on VEOCI reporting form

Health and Safety: Quarantined Students



NEW HAVEN PUBLIC SCHOOLS

- All students will receive devices at the start of the school year.
- All teachers will maintain a Google Classroom
- If a student is quarantined, they will be required to log on each day to receive and complete their classwork.
- Teachers will post daily work for quarantined students

Health and Safety: Cancellation



NEW HAVEN PUBLIC SCHOOLS

- *In the event that the Superintendent must cancel class due to Department of Health indicators, all students and families will receive notification via multiple avenues (similar to snow days), including via ParentLink, text, phone, email and postings on our website and local media outlets.
- At the start of the school year, every student will have a device and distributed information on how to access remote learning accounts and remote learning devices for all students and families.
- All teachers conduct remote learning classes via Google Classrooms and the Google online suite of applications.
- Superintendent
 - Consults with the Department of Health, Board of Education, and CSDE.
 - Notifies all Department Heads to initiate implementation of the High Risk plan.
 - Activates the communication plan using Parent Link, local media outlets, NHPS website to inform the entire community of the closure and activation of the Distance Learning,
 - Reiterate health protocols and provide on-gong guidance on safety protocol
- Transportation
 - All transportation stops during the High Risk plan.
- Operations
 - Thirty-seven buildings stay open to prepare meals for all districtwide.
 - All other facilities are closed until the High Risk plan is lifted.

Health and Safety: Cleaning protocols



NEW HAVEN PUBLIC SCHOOLS

NEW HAVEN PUBLIC SCHOOLS FACILITIES DEPARTMENT

RETURN TO SCHOOL (FISCAL YEAR 2021-2022) COVID-19 CLEANING & DISINFECTION PLAN

This checklist is to be used to deep clean and disinfect all common touch point surfaces, or for an entire facility.

CHECKLIST INSTRUCTIONS:

- Cleaning staff are required to initial the appropriate box for areas that they have sanitized.
- Checklists must be copied and filed on-site then submitted by Building Managers to Supervisors weekly.
- Supervisors are required to approve each form by printing and initialing the top right of each form.
- Supervisors will provide a copy of each form to Environmental Health & Safety Trainer & Coordinator (E.H.S.). The E.H.S will then file electronic and hard copies.
- See sample of completed form (Fig. 1)

Products used: Hillyard Q.T® Plus 24 Arsenal or Hillyard Re-Juv-Nal® (EPA Reg # 1839-169-1658) . These are CDC approved products for the treatment of surfaces contaminated by the COVID-19 virus. See links below for SDS sheets.

<https://b2b.hillyard.com/productdetail/index/grid/wwm/PD~HIL0082400>

<https://b2b.hillyard.com/productdetail/index/grid/wwm/PD~HIL0081600>

CLEANING STEPS:

- Apply eye protection and gloves
- Clean and wipe surface
- Disinfect with backpack sprayer utilizing "ready to use" Hillyard Q.T® Plus 24 Arsenal" or Re-Juv-Nal® solution.
- Allow product to remain on surface for 10 minutes of contact time

SCHOOL NAME: James Hillhouse High School WEEK ENDING: June 2, 2020 SUPERVISOR: John Doe J.D.

GYM	MONDAY			TUESDAY			WEDNESDAY			THURSDAY			FRIDAY			SATURDAY			SUNDAY		
	Early	Mid	EOD	Early	Mid	EOD	Early	Mid	EOD	Early	Mid	EOD	Early	Mid	EOD	Early	Mid	EOD	Early	Mid	EOD
Switches/Plates	J.M.	J.M.	D.F.	P.L.	P.L.	D.F.	J.M.	J.M.	D.F.	J.M.	J.M.	M.O.	J.M.	J.M.	D.F.	E.S.	E.S.	D.F.	J.M.	J.M.	D.F.
Bleachers	J.M.	J.M.	D.F.	P.L.	P.L.	D.F.	J.M.	J.M.	D.F.	J.M.	J.M.	M.O.	J.M.	J.M.	D.F.	E.S.	E.S.	D.F.	J.M.	J.M.	D.F.
ATHLETIC Equipment	J.M.	J.M.	D.F.	P.L.	P.L.	D.F.	J.M.	J.M.	D.F.	J.M.	J.M.	M.O.	J.M.	J.M.	D.F.	E.S.	E.S.	D.F.	J.M.	J.M.	D.F.
All Locker Room Areas	J.M.	J.M.	D.F.	P.L.	P.L.	D.F.	J.M.	J.M.	D.F.	J.M.	J.M.	M.O.	J.M.	J.M.	D.F.	E.S.	E.S.	D.F.	J.M.	J.M.	D.F.
Mats	J.M.	J.M.	D.F.	P.L.	P.L.	D.F.	J.M.	J.M.	D.F.	J.M.	J.M.	M.O.	J.M.	J.M.	D.F.	E.S.	E.S.	D.F.	J.M.	J.M.	D.F.
Apparatus	J.M.	J.M.	D.F.	P.L.	P.L.	D.F.	J.M.	J.M.	D.F.	J.M.	J.M.	M.O.	J.M.	J.M.	D.F.	E.S.	E.S.	D.F.	J.M.	J.M.	D.F.
KITCHEN/CATERING	Early	Mid	EOD	Early	Mid	EOD	Early	Mid	EOD	Early	Mid	EOD	Early	Mid	EOD	Early	Mid	EOD	Early	Mid	EOD
Appliances/ Utensils	J.M.	J.M.	D.F.	P.L.	P.L.	D.F.	J.M.	J.M.	D.F.	J.M.	J.M.	M.O.	J.M.	J.M.	D.F.	E.S.	E.S.	D.F.	J.M.	J.M.	D.F.
Sinks/ Faucets	J.M.	J.M.	D.F.	P.L.	P.L.	D.F.	J.M.	J.M.	D.F.	J.M.	J.M.	M.O.	J.M.	J.M.	D.F.	E.S.	E.S.	D.F.	J.M.	J.M.	D.F.
Counters	J.M.	J.M.	D.F.	P.L.	P.L.	D.F.	J.M.	J.M.	D.F.	J.M.	J.M.	M.O.	J.M.	J.M.	D.F.	E.S.	E.S.	D.F.	J.M.	J.M.	D.F.
Switches/Plates	J.M.	J.M.	D.F.	P.L.	P.L.	D.F.	J.M.	J.M.	D.F.	J.M.	J.M.	M.O.	J.M.	J.M.	D.F.	E.S.	E.S.	D.F.	J.M.	J.M.	D.F.
Tables / Prep Tables	J.M.	J.M.	D.F.	P.L.	P.L.	D.F.	J.M.	J.M.	D.F.	J.M.	J.M.	M.O.	J.M.	J.M.	D.F.	E.S.	E.S.	D.F.	J.M.	J.M.	D.F.
Seats	J.M.	J.M.	D.F.	P.L.	P.L.	D.F.	J.M.	J.M.	D.F.	J.M.	J.M.	M.O.	J.M.	J.M.	D.F.	E.S.	E.S.	D.F.	J.M.	J.M.	D.F.
LIBRARY	Early	Mid	EOD	Early	Mid	EOD	Early	Mid	EOD	Early	Mid	EOD	Early	Mid	EOD	Early	Mid	EOD	Early	Mid	EOD
Computers/ Mouse	J.M.	J.M.	D.F.	P.L.	P.L.	D.F.	J.M.	J.M.	D.F.	J.M.	J.M.	M.O.	J.M.	J.M.	D.F.	E.S.	E.S.	D.F.	J.M.	J.M.	D.F.
Counters	J.M.	J.M.	D.F.	P.L.	P.L.	D.F.	J.M.	J.M.	D.F.	J.M.	J.M.	M.O.	J.M.	J.M.	D.F.	E.S.	E.S.	D.F.	J.M.	J.M.	D.F.
Switches/Plates	J.M.	J.M.	D.F.	P.L.	P.L.	D.F.	J.M.	J.M.	D.F.	J.M.	J.M.	M.O.	J.M.	J.M.	D.F.	E.S.	E.S.	D.F.	J.M.	J.M.	D.F.
Tables	J.M.	J.M.	D.F.	P.L.	P.L.	D.F.	J.M.	J.M.	D.F.	J.M.	J.M.	M.O.	J.M.	J.M.	D.F.	E.S.	E.S.	D.F.	J.M.	J.M.	D.F.
Seats	J.M.	J.M.	D.F.	P.L.	P.L.	D.F.	J.M.	J.M.	D.F.	J.M.	J.M.	M.O.	J.M.	J.M.	D.F.	E.S.	E.S.	D.F.	J.M.	J.M.	D.F.
AUDITORIUM	Early	Mid	EOD	Early	Mid	EOD	Early	Mid	EOD	Early	Mid	EOD	Early	Mid	EOD	Early	Mid	EOD	Early	Mid	EOD
Seats	J.M.	J.M.	D.F.	P.L.	P.L.	D.F.	J.M.	J.M.	D.F.	J.M.	J.M.	M.O.	J.M.	J.M.	D.F.	E.S.	E.S.	D.F.	J.M.	J.M.	D.F.
Microphone / Pedals	J.M.	J.M.	D.F.	P.L.	P.L.	D.F.	J.M.	J.M.	D.F.	J.M.	J.M.	M.O.	J.M.	J.M.	D.F.	E.S.	E.S.	D.F.	J.M.	J.M.	D.F.
Handles	J.M.	J.M.	D.F.	P.L.	P.L.	D.F.	J.M.	J.M.	D.F.	J.M.	J.M.	M.O.	J.M.	J.M.	D.F.	E.S.	E.S.	D.F.	J.M.	J.M.	D.F.

Fig. 1

Health and Safety: Bus Safety



NEW HAVEN PUBLIC SCHOOLS

- Students will be required to wear a facemask.
- If a student does not have a mask, the bus driver will provide a mask to the student.
- Students should keep 6 feet apart while waiting at the bus stop.
- If a student is accompanied by an attendant, they must comply with face mask and bus stop requirements.
- School bus drivers will wear masks, and enforce safety, boarding and alighting.
- Bus disinfecting 2x per day
- Ventilation: Drivers will keep windows open unless safety dictates otherwise

